

PROGRAM PHILOSOPHY

The Boston Center offers partial hospitalization programs for children and adolescents. The purpose of a partial hospitalization program is to function as a diversion from inpatient hospitalization or to facilitate the transition from hospital to community. For referrals that are primarily for inpatient diversion, The Boston Center is able to manage children and adolescents with acute behavior disorders.

The Boston Center works with clients and families in a collaborative effort to facilitate positive change. Family involvement is a vital component of the partial hospitalization treatment approach. Family members are asked to actively participate in treatment by attending a family support group and family sessions.

INFORMATION AND REFERRALS

To make a referral, please contact the ACCES Center, 24 hours a day, 7 days a week, at (800) 22-ACCES (222-2237).

To refer a patient to partial hospitalization, you may obtain prior approval from the patient's insurance company before contacting the ACCES Center, or we can do an on-site evaluation and contact the insurance company with information needed for authorization.

For more information on the program, please call the Boston Center Director at (617) 783-9676.

The programs operate Monday through Friday, 9:30 AM – 3:00 PM.

Parents/guardians assume responsibility for making all arrangements for pick up and drop off for clients attending the program. Under special circumstances, arrangements for Transportation Service may be available.

The Boston Center is a program of Arbour Health System, the leading private behavioral health system in Massachusetts. Arbour Health System consists of Arbour Hospital, Boston; Arbour-Fuller Hospital, South Attleboro; Arbour-HRI Hospital, Brookline; Pembroke Hospital; Westwood Lodge; Lowell Treatment Center; The Boston Center; Arbour Counseling Services, with eleven locations throughout eastern Massachusetts; Arbour SeniorCare; and Choate ESP.

09/07



THE BOSTON CENTER

PROVIDING SHORT-TERM INTENSIVE
TREATMENT FOR CHILDREN
AND ADOLESCENTS



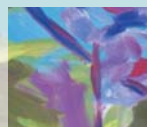
THE BOSTON
CENTER

A Program Of Arbour Health System

14 Fordham Road • Allston, MA 02134 • (617) 783-9676

Easy Access to Quality Mental Health Services

www.arbourhealth.com



CHILD PARTIAL HOSPITALIZATION PROGRAM

The Boston Center's children's services provide a highly structured, intensive behavior modification group program for school-aged children with emotional and behavioral difficulties. The program is the only one of its kind for children ages 5-11 in the Boston area.

PROGRAM GOALS

- Provide crisis stabilization
- Teach clients to understand and express their feelings
- Improve communication skills
- Develop healthy coping and problem-solving skills
- Provide parenting support and psychological education.

PROGRAM COMPONENTS

- Multidisciplinary team approach to treatment
- Psychiatric evaluation
- Medication evaluation and monitoring
- Diagnostic evaluation
- Individualized treatment plans
- Group therapies:
 - Social/coping skills
 - Cognitive-behavioral psychotherapy
 - Psychoeducation
 - Anger and stress management
 - Feelings/expression
- Substance abuse
- Individual sessions
- Family meetings
- Expressive therapy

STAFFING

- Child/adolescent psychiatrist
- Clinical nurse specialist
- Master's Level Clinicians

ADOLESCENT PARTIAL HOSPITALIZATION PROGRAM

This highly structured, intensive group program offers treatment to adolescents, 12-18, seeking help with acute emotional and behavioral disorders.

PROGRAM GOALS

- Provide crisis stabilization
- Teach clients to identify their thoughts and emotions
- Improve communication skills
- Develop and strengthen coping and problem-solving skills
- Assist in the development of a support network
- Improve family communication.

PROGRAM COMPONENTS

- Multidisciplinary team approach to treatment
- Psychiatric evaluation
- Medication evaluation and monitoring
- Diagnostic evaluation
- Individualized treatment plans
- Group therapies:
 - Solution-focused psychotherapy
 - Life skill building
 - Cognitive-behavioral psychotherapy
 - Psychoeducation
 - Anger and stress management
- Substance abuse
- Individual sessions
- Family meetings
- Expressive therapy

STAFFING

- Child/adolescent psychiatrist
- Clinical nurse specialist
- Master's level licensed clinicians

ABOUT THE COVER

In all its beauty, the harbour is a symbol of comfort and hope, safety and shelter.