

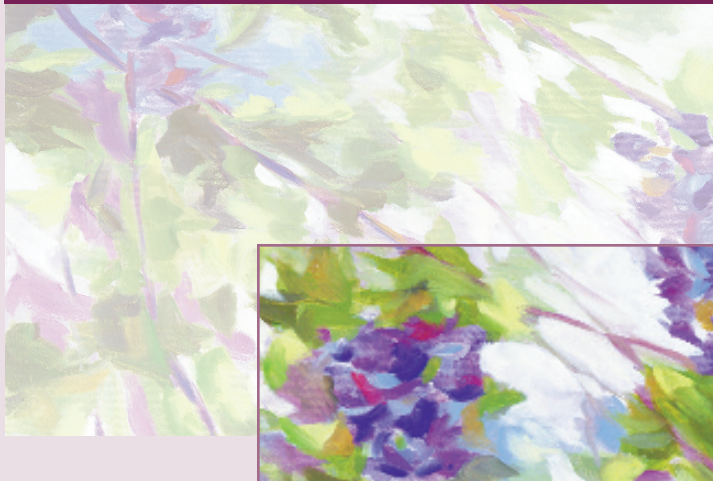
DIRECTIONS TO ARBOUR COUNSELING SERVICES OF FRANKLIN

FROM RHODE ISLAND:

- Take Route 495 North to Exit 17.
- Take a right at the exit to the first traffic light (Route 140 South.)
- Take a left at the light (shopping center on right.)
- Follow road around the curve. The Center is in the first building on the left, 38 Pond Street, Suite 101.

FROM THE NORTH:

- Take Route 495 South to Exit 17.
- Take a left onto Route 140 South.
- Take a left at the light (shopping center on right.)
- Follow road around the curve. The Center is in the first building on the left, 38 Pond Street, Suite 101.



ARBOUR COUNSELING SERVICES OF FRANKLIN

ABOUT THE COVER

In all its beauty, the arbour is a symbol of comfort and hope, safety and shelter.



ARBOUR COUNSELING SERVICES

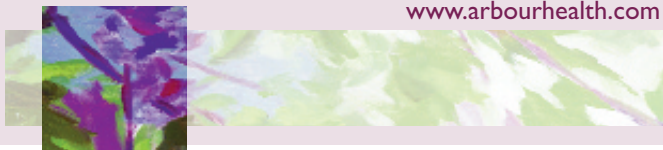
A Division Of Arbour Health System


38 Pond Street, Suite 101 • Franklin, MA 02038

Phone: (508) 528-6037 • Fax: (508) 520-6783

Easy Access to Quality Mental Health Services

www.arbourhealth.com





With locations throughout eastern Massachusetts, Arbour Counseling Services offers a full range of programs and clinical specialties. The Franklin Center offers the following services:

- Individual, couple, family, and group counseling for all ages.
- Emergency assessments and responsive assistance during times of crisis.
- Individual treatment plans developed in close collaboration with patients' and referrers' goals and needs. Primary therapists work to coordinate all treatment issues and to maintain communication with other involved professionals.
- Evaluation and treatment of anxiety, depression and stress-related issues.

The Franklin Center also specializes in the following areas:

- ADD/ADHD
- Child and Adolescent Psychiatry
- Court-Referred Evaluations for Adults and Adolescents
- Developmental Disabilities
- Dual Diagnosis
- Early Childhood Evaluations and Consultations
- Gay and Lesbian Issues
- Geropsychiatry
- Milford School-Based Services
- Psychopharmacology
- School-Related Issues
- Special Needs
- Trauma Services
- Women's Issues

HOURS OF OPERATION

SUNDAY	Closed
MONDAY	9:00 am - 8:00 pm
TUESDAY	9:00 am - 8:00 pm
WEDNESDAY	9:00 am - 8:00 pm
THURSDAY	9:00 am - 8:00 pm
FRIDAY	9:00 am - 7:00 pm
SATURDAY	9:00 am - 4:00 pm

The Center is accessible to the physically disabled.

For more information, call Vicki Grauer, LICSW, at 508-528-6037.

All appointments are scheduled with the highest level of confidentiality, with urgent appointments usually available on the same day of contact.

Arbour Counseling Services accepts most forms of payment, including commercial insurance, Aetna, Inc., Blue Cross Blue Shield, Cenpatco, Fallon Health Plan Harvard Pilgrim Health Care, Massachusetts Behavioral Health Partnership, Neighborhood Health Plan, Network Health, Tufts Health Plan, United Behavioral Health, Medicare, Medicaid and many other HMO's and PPO's. Self-pay arrangements are also available.

Arbour Counseling Services is a division of Arbour Health System, the largest private behavioral health system in Massachusetts. Arbour Health System consists of Arbour Hospital, Boston; Arbour-Fuller Hospital, South Attleboro; Arbour-HRI Hospital, Brookline; Pembroke Hospital; Westwood Lodge; Lowell Treatment Center; The Boston Center; The Quincy Center; Arbour Counseling Services, with many locations throughout eastern Massachusetts; and Arbour SeniorCare.

